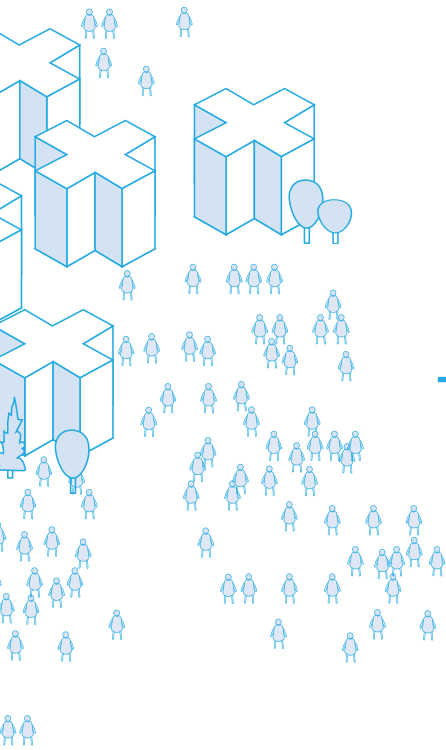


# CORPS MEMBER JOURNEY MAP

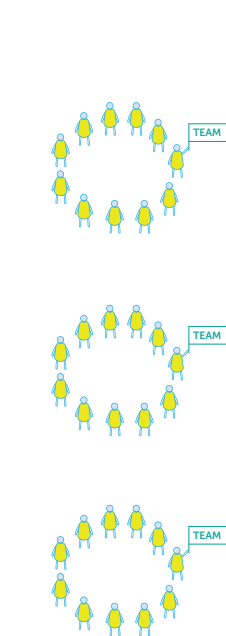
Public Housing in NYC:  
a city within the city



Residents 18-24 are unemployed at higher rates than their peers outside of NYCHA.

GCF connects the dots between young talent and climate change, health and equality imperatives and opportunity in emerging fields.

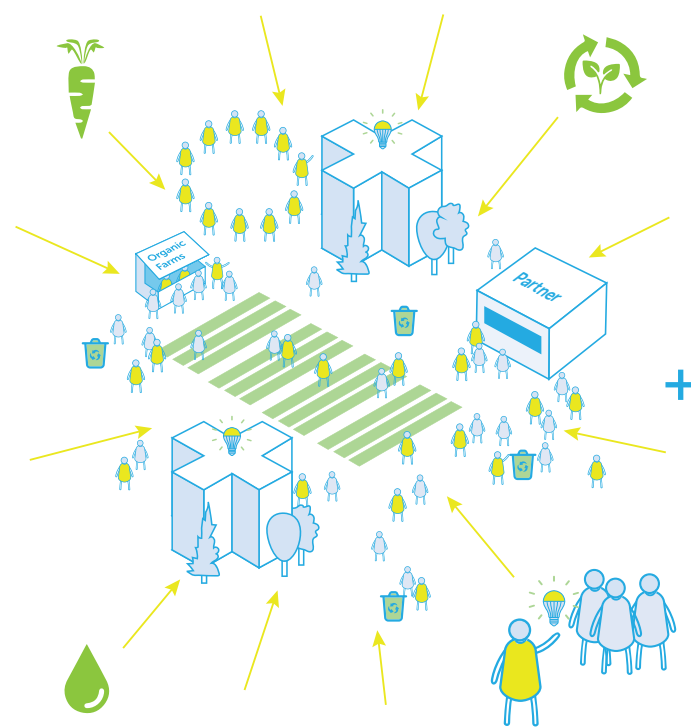
## RECRUITMENT & ORIENTATION



Build the force for green service, one cohort at a time.

## SERVICE & TRAINING

Greening NYCHA communities through visible, measurable, impactful, and skill-building paid service initiatives.



GCF's Corps drives large-scale environmental initiatives in NYCHA to transform land, buildings & practices, engaging thousands of residents.



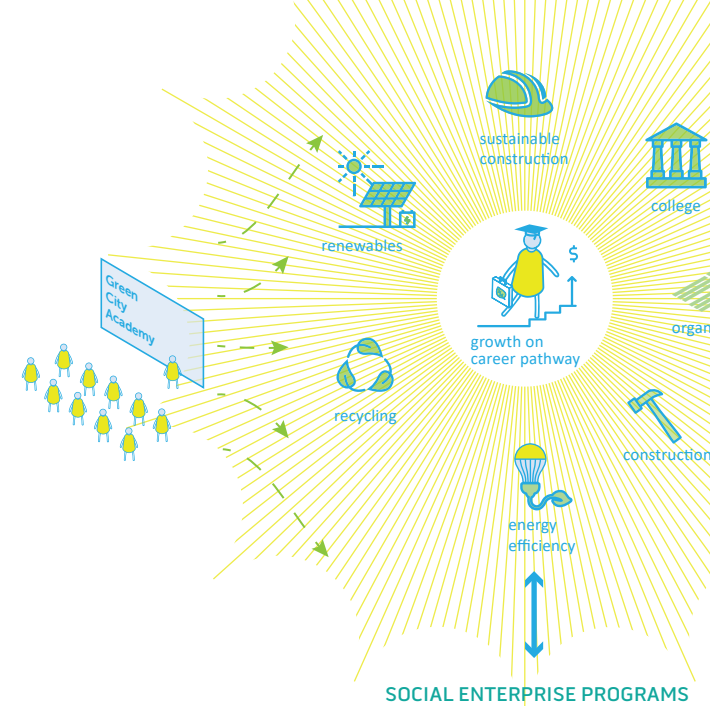
Members earn stipends and an education award at graduation. GCF provides MetroCard, certifications & support services.



Professional development, hard + power skills, eco literacy, community building.

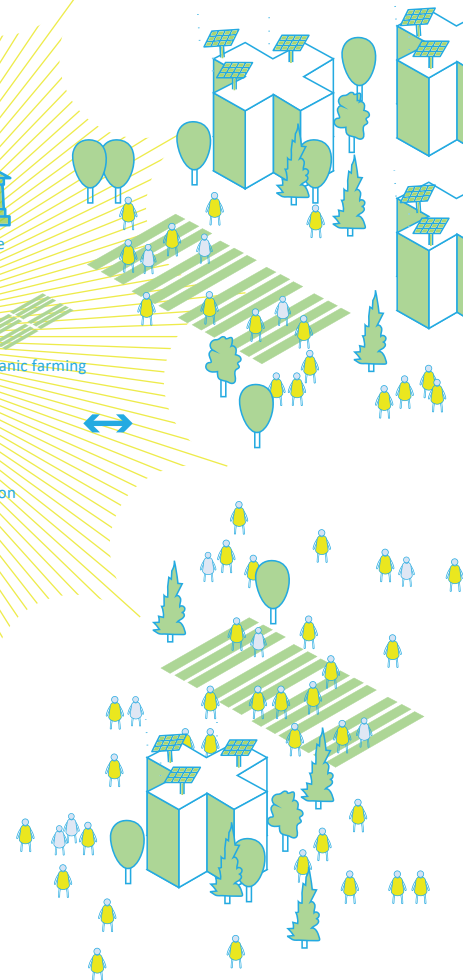
## ALUMNIHOOD

life-long commitment to alumni career development



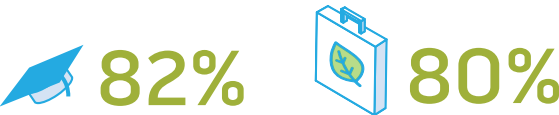
Continued engagement, support, and training, coupled with employer cultivation.

Alumni power green and equitable cities



# IMPACT

10 YEARS, 20 COHORTS, 500 GRADUATES



graduation rate

of grads transition to work/college in six months



# SUPPORT GCF

Your donation will empower the next generation of sustainability leaders and fuel the environmental transformation of public housing and New York City.

SCAN TO DONATE:



OR TEXT:

"GIVEGCF"  
TO: 44321

THANK YOU!

 [greencityforce.org/donate](https://greencityforce.org/donate)

   @greencityforce



# GREEN CITY FORCE

## MISSION

Founded in 2009, Green City Force's (GCF) mission is to break the cycle of poverty, preparing young adults who live in public housing to succeed in their chosen careers by engaging them in service, training, and work experiences related to the green economy. In doing so, GCF encourages them to lead socially and environmentally sustainable lives. We are working towards a "green city" built on principles of sustainability, social, economic and environmental justice.



500+ ALUMNI

## VERTICALS

### Service Corps

An AmeriCorps term for 18-24 year old public housing residents to gain skills and experience for green jobs while serving to make NYCHA communities more sustainable and healthy.

### Career & Alumni Services

Ongoing support for GCF alumni, offering advanced trainings for career pathways progression, career counseling, and connection with employer partners.

### Social Enterprise Programs

Employment opportunities through our in-house energy services programs for GCF alumni starting at \$15/hr.

## MAJOR SUPPORTERS INCLUDE:



SERVICE  
TRAINING  
SUSTAINABILITY  
JUSTICE